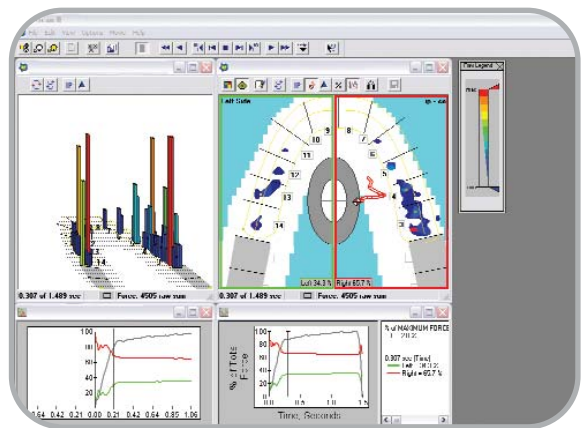




*T-Scan III System Handle*

In 1987, Tekscan developed *T-Scan*®, the first ever grid-based sensor technology designed specifically for occlusal analysis. Tekscan created this powerful diagnostic tool in response to the needs of dentists seeking an accurate way to dynamically measure occlusion. Today, after numerous enhancements, the *T-Scan* III is the only solution available on the market to offer instantaneous occlusal data, including timing and force. This 3rd generation system features a consistent sampling speed of 100 Hz and advanced software analysis tools to provide better quality treatment.

*T-Scan* III is so versatile; it can be integrated into your existing diagnostic and management software, helping to make your practice more efficient and productive than ever.



*T-Scan III is easy to use, and the data it produces is simple to interpret.*

*With the new software feature, **Turbo Mode**, variable sampling rates will be up to 495Hz!*

Here's how it works...

The ultra-thin, reusable sensor, shaped to fit the dental arch, inserts into the sensor handle, which connects into the USB port of your PC, making it easy to move from one operator to another. Evaluating occlusal forces is as simple as having a patient bite down on the sensor. The sensor sends real-time and relative occlusal contact force information to Windows™ based software.

### Applications:

- Fixed & Removable Prosthetics
- Implant Prosthetics
- TMD Appliances
- Occlusal Equilibration
- Anterior Guidance/Disclusion Time Reduction
- Abfraction Management
- Periodontal Management
- Differential Diagnosis
- Orthodontics
- Locating Painful Teeth
- Cosmetic Dentistry
- Dental Case Finishing
- And More!

### Benefits:

- Instant documentation of your patient's occlusion
- Time-saving analysis which enhances production
- Integration with other Windows-compliant products in diagnostic workstation environments
- Improved diagnoses
- Reduce the risk of implant failure, traumatized teeth, unstable dentures, ineffective splints, and porcelain fractures
- Enhance patient education
- Minimize trauma to abutment teeth, broken implant abutments, unstable denture prosthesis, and fractured dental restorative materials
- Provide legal documentation of outcome

### Found in:

Private Practices, Universities, Clinical Settings, and more...

### Used By:

General Dentists, Orthodontists, Periodontists, Prosthodontists, and more...

### Languages:

Tekscan software supports a multitude of languages, including English, Chinese, French, German, Italian, Japanese, Korean, and Spanish.

# The Well Balanced Bite

The ability to compare bilateral contacts with pinpoint accuracy is one of the greatest strengths of *T-Scan III*. The software computes the forces of all the teeth, instantly summarizing this information for the clinician in new diagnostic displays that are accessible with the click of a mouse.

- Instant IP shows the maximum intercuspal position for the recorded movie with a click of the IP icon.
- Center of Force analysis with the "balance indicator" shows the dentist the "balance of the bite" and the effects of any treatment procedures on this delicate balance superimposed on the target.
- Center of Force trajectory identifies the presence and magnitude of occlusal interferences and alerts the clinician to any destructive contacts that damage expensive treatments such as implants and complex bridge work.

With improved sensitivity, the *T-Scan III* can now capture guided closure contacts. A superior arch model enables you to identify contact points on individual teeth and the relationship to all other tooth contacts.

The force and timing of the tooth contacts are shown in easily understandable color-coded contour images. These allow instant diagnosis of the occlusion, as well as instant IP (Figure 1), Center of Force (Figure 2), and force trajectory (Figure 3).

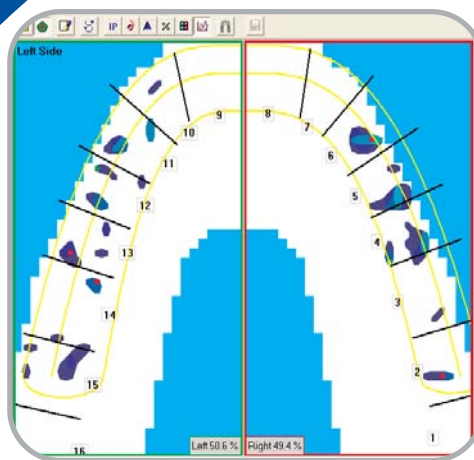


Figure 1 - Instant IP

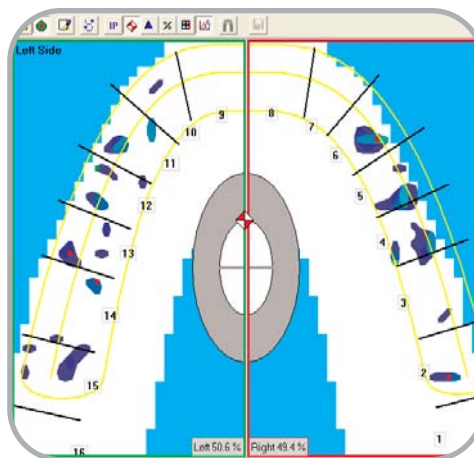


Figure 2 - Center of Force

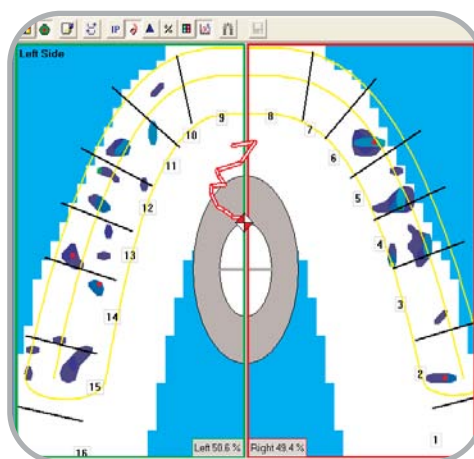


Figure 3 - Center of Force Trajectory

Call 1-800-BITE-NOW today to schedule a demonstration!

Tekscan, Inc.  
307 West First Street  
South Boston, MA 02127-1309 USA  
tel: 617.464.4500/800.248.3669  
fax: 617.464.4266  
e-mail: [marketing@tekscan.com](mailto:marketing@tekscan.com)  
website: [www.tekscan.com](http://www.tekscan.com)

RevD\_021307

